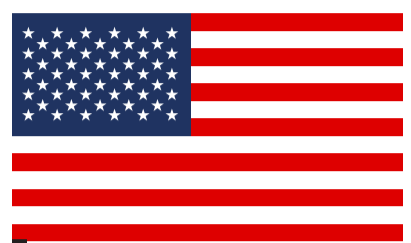


U.S. AUTOMOBILE ACCIDENTS STATISTICS

IN 2015

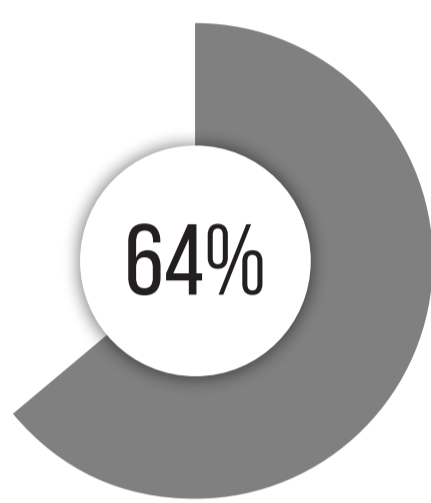


254.6 MILLION

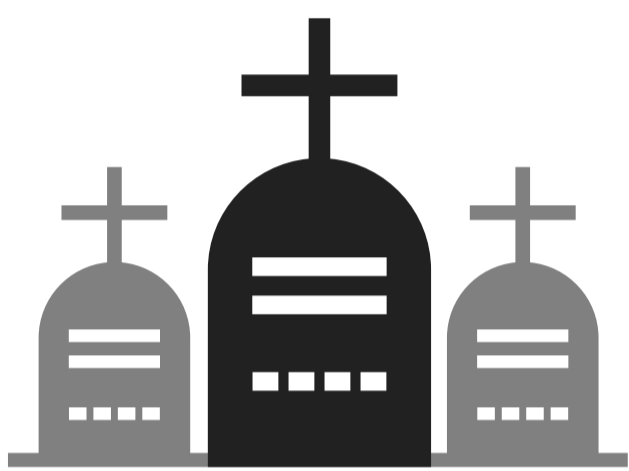
NUMBER OF PASSENGER VEHICLES REGISTERED IN THE UNITED STATES



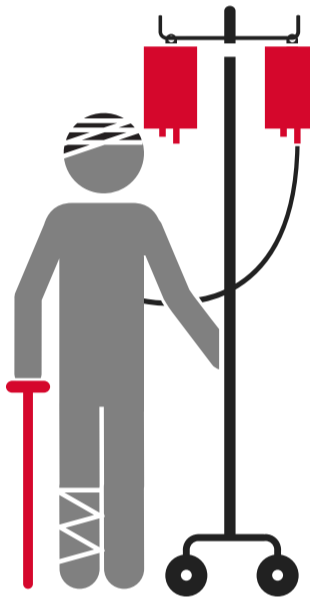
22,441



THIS REPRESENTS **64 PERCENT** OF ALL MOTOR VEHICLE CRASH FATALITIES



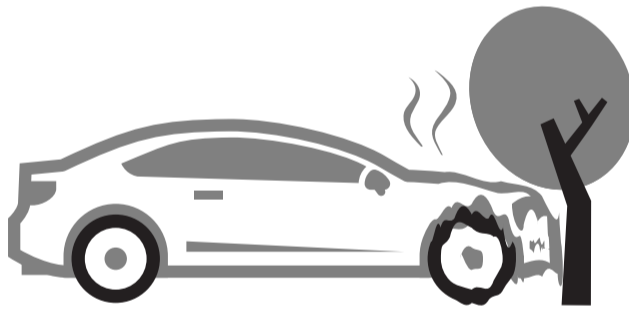
PASSENGER VEHICLE FATALITIES (CARS, SUVs, PICKUP TRUCKS, VANS)



AN ESTIMATED **2.18 MILLION** PASSENGER VEHICLE OCCUPANTS WERE INJURED IN CRASHES

PASSENGER VEHICLE FATALITIES BY VEHICLE TYPE

13,157



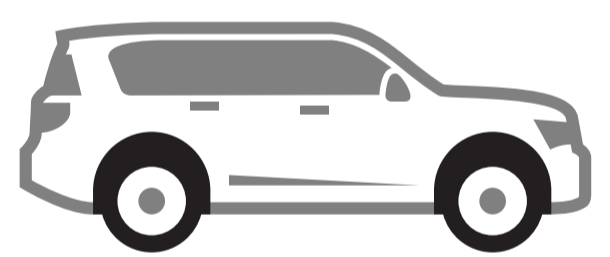
PASSENGER CAR

4,467



PICKUP TRUCK

4,545

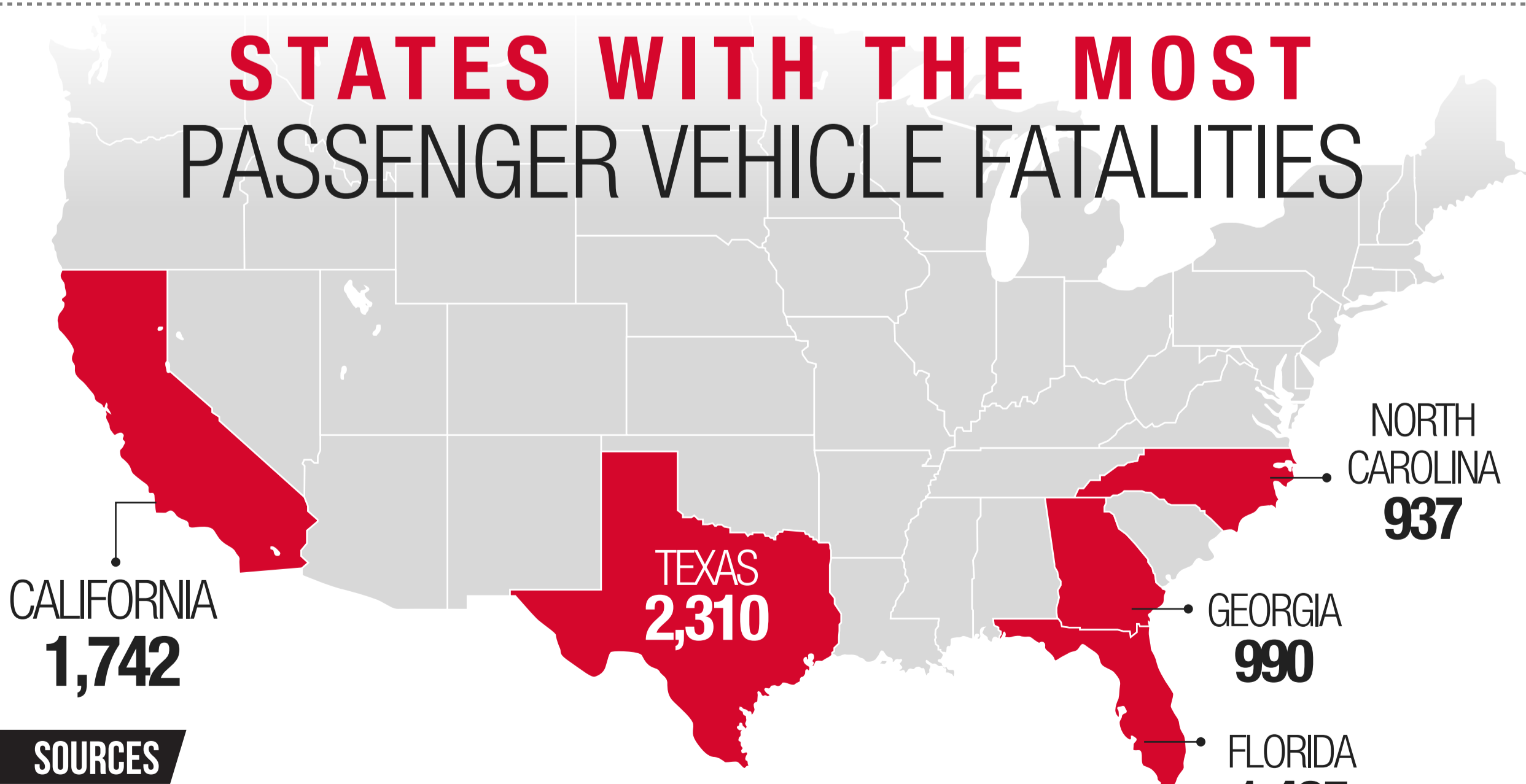


SUV



22% OF PASSENGER VEHICLE DRIVERS IN FATAL CRASHES WERE ALCOHOL-IMPAIRED

STATES WITH THE MOST PASSENGER VEHICLE FATALITIES



SOURCES

<http://www.iihs.org/iihs/topics/t/general-statistics/fatalityfacts/passenger-vehicles>
<http://www.iihs.org/iihs/topics/t/general-statistics/fatalityfacts/state-by-state-overview>
<https://crashstats.nhtsa.dot.gov/Api/Public/ViewPublication/812318>

DISCLAIMER

The information provided on Thomas J. Henry website is not intended to be legal advice, but merely conveys general information related to legal issues commonly encountered. This information is not intended to create any legal relationship between Thomas J. Henry or any attorney and the user. Neither the transmission nor receipt of these website materials will create an attorney-client relationship between sender and receiver.

INJURED IN AN AUTOMOBILE ACCIDENT? CONTACT THOMAS J. HENRY.