

TRAUMATIC BRAIN INJURIES STATISTICS



A DISRUPTION OF NORMAL BRAIN FUNCTION DUE TO A BUMP, BLOW, JOLT, OR PENETRATING HEAD INJURY



SEVERE HEADACHE



LOSS OF VISION



DIZZINESS



VOMITING OR NAUSEA

SEIZURES AND CONVULSIONS



LOSS OF CONSCIOUSNESS OR CONFUSION



SLURRED SPEECH

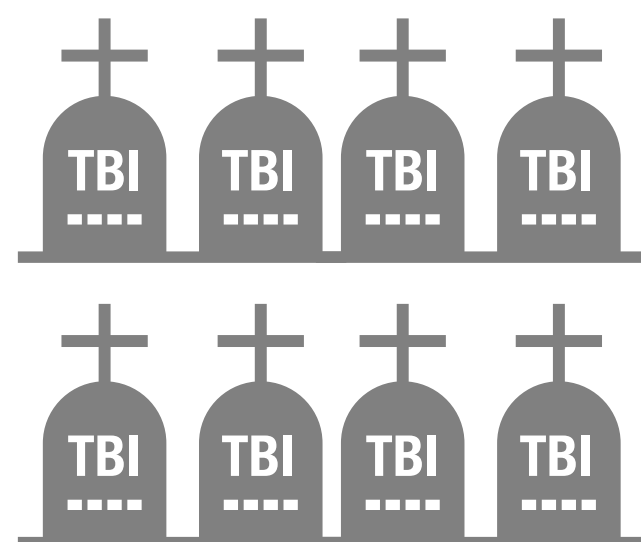


IN 2010, TBI CONTRIBUTED TO MORE THAN **50,000** DEATHS IN THE UNITED STATES



TBIs DEATHS

TBIs CONSTITUTE **30%** OF ALL INJURY DEATHS IN THE U.S.



THERE ARE **138** TBI RELATED DEATHS PER DAY



IN 2010,

2.2 MILLION EMERGENCY DEPARTMENT VISITORS DIAGNOSED WITH A TBI

LEADING CAUSES OF TBI

(BETWEEN 2006 AND 2010)

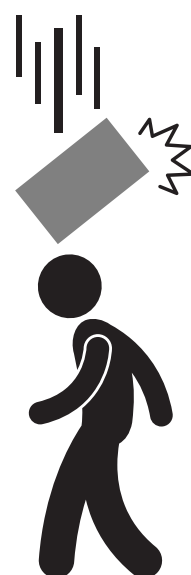


FALLS **40.5%**



MOTOR VEHICLE TRAFFIC CRASHES

14.3%

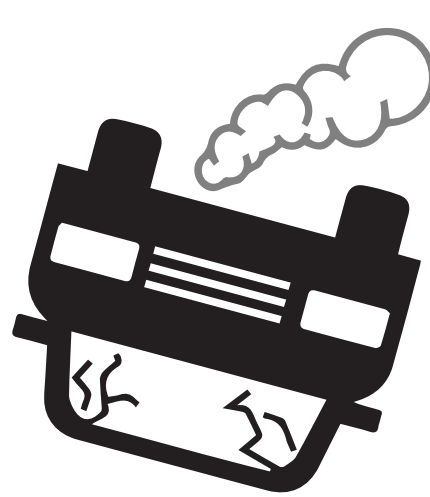


15.5% STRUCK BY/AGAINST AN OBJECT

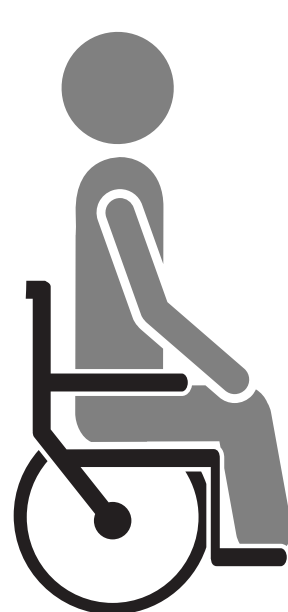


ASSAULTS **10.7%**

ONE OUT OF FOUR



TBI-RELATED DEATHS WERE CAUSED BY A MOTOR VEHICLE ACCIDENT



APPROXIMATELY **5.3 MILLION** AMERICANS LIVING WITH TBI-RELATED DISABILITY

<https://www.cdc.gov/traumaticbraininjury/pdf/mtbireport-a.pdf>
https://www.cdc.gov/traumaticbraininjury/get_the_facts.html
<https://www.cdc.gov/traumaticbraininjury/severe.html>

DISCLAIMER

The information provided on Thomas J. Henry website is not intended to be legal advice, but merely conveys general information related to legal issues commonly encountered. This information is not intended to create any legal relationship between Thomas J. Henry or any attorney and the user. Neither the transmission nor receipt of these website materials will create an attorney-client relationship between sender and receiver.