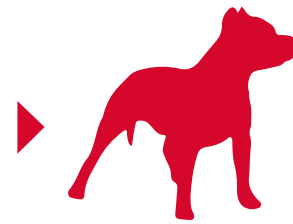


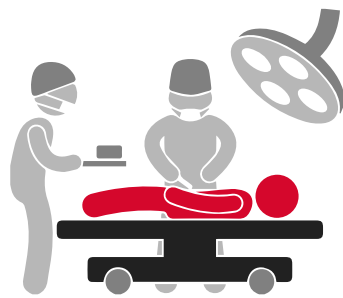
DOG BITE INJURIES STATISTICS



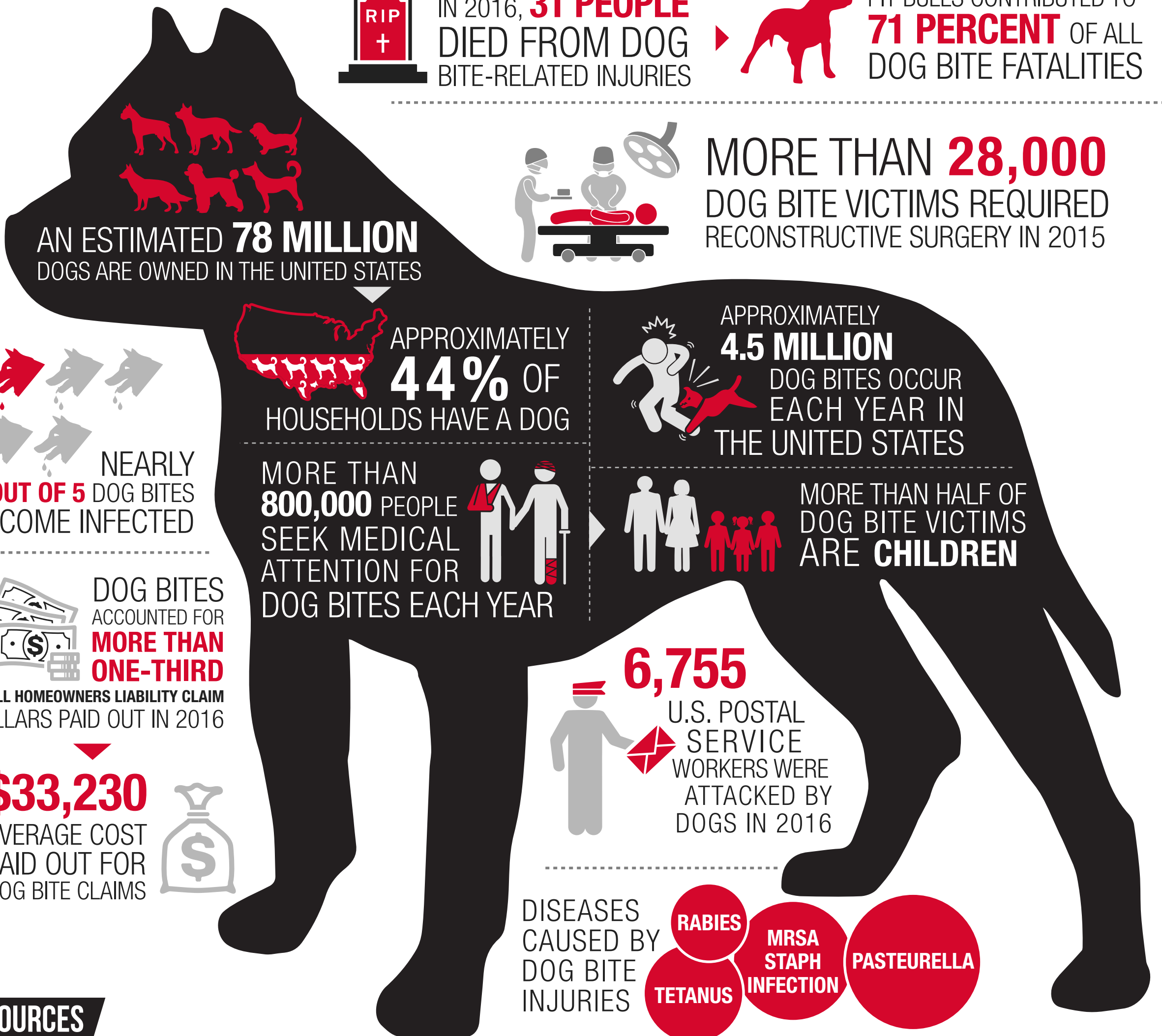
IN 2016, **31 PEOPLE** DIED FROM DOG BITE-RELATED INJURIES



PIT BULLS CONTRIBUTED TO **71 PERCENT** OF ALL DOG BITE FATALITIES



MORE THAN **28,000** DOG BITE VICTIMS REQUIRED RECONSTRUCTIVE SURGERY IN 2015



AN ESTIMATED **78 MILLION** DOGS ARE OWNED IN THE UNITED STATES



APPROXIMATELY **44%** OF HOUSEHOLDS HAVE A DOG



APPROXIMATELY **4.5 MILLION** DOG BITES OCCUR EACH YEAR IN THE UNITED STATES



NEARLY **1 OUT OF 5** DOG BITES BECOME INFECTED

MORE THAN **800,000** PEOPLE SEEK MEDICAL ATTENTION FOR DOG BITES EACH YEAR



MORE THAN HALF OF DOG BITE VICTIMS ARE **CHILDREN**

DOG BITES ACCOUNTED FOR **MORE THAN ONE-THIRD** OF ALL HOMEOWNERS LIABILITY CLAIM DOLLARS PAID OUT IN 2016

\$33,230

AVERAGE COST PAID OUT FOR DOG BITE CLAIMS



6,755

U.S. POSTAL SERVICE WORKERS WERE ATTACKED BY DOGS IN 2016

DISEASES CAUSED BY DOG BITE INJURIES



SOURCES

- <https://www.cdc.gov/features/dog-bite-prevention/>
- <https://www.aspc.org/animal-homelessness/shelter-intake-and-surrender/pet-statistics>
- <http://www.iii.org/issue-update/dog-bite-liability>
- https://about.usps.com/news/national-releases/2017/pr17_016.htm
- <http://www.dogsbite.org/dog-bite-statistics-quick-statistics.php>
- <https://www.avma.org/public/Pages/Dog-Bite-Prevention.aspx>

DISCLAIMER

The information provided on Thomas J. Henry website is not intended to be legal advice, but merely conveys general information related to legal issues commonly encountered. This information is not intended to create any legal relationship between Thomas J. Henry or any attorney and the user. Neither the transmission nor receipt of these website materials will create an attorney-client relationship between sender and receiver.

INJURED BY A DOG BITE? CONTACT THOMAS J. HENRY

Corpus Christi
(361) 985-0600

San Antonio
(210) 656-1000

Houston
(713) 338-2525

THOMAS J HENRY
www.thomasjhenrylaw.com